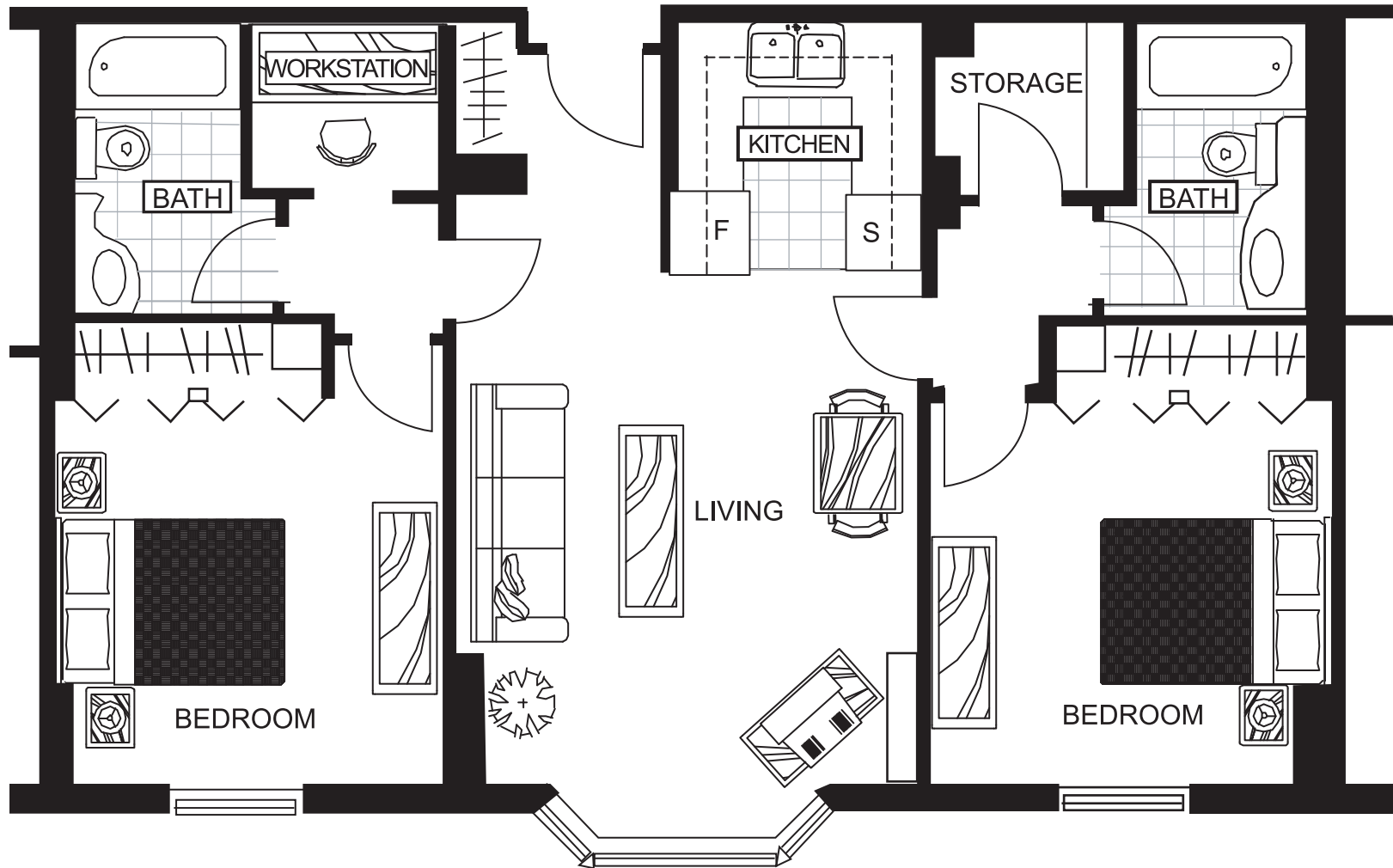


# ANDERSON THOMSON TOWER



## PLAN B - TWO BEDROOM/TWO BATH

*Our apartment hotel suites feature  
an in-suite office workspace*

## FOR AN APPOINTMENT TO VIEW:

**POLAR DEVELOPMENTS LTD.**

PHONE: 867-873-5701 FAX: 867-873-3638

P.O. BOX 2542, 5300-49TH STREET

YELLOWKNIFE, NT X1A 2P8